

# Bluestone Wildlife Management Area

**BLUESTONE WILDLIFE MANAGEMENT AREA** offers visitors a variety of outdoor recreational opportunities on 17,632 acres. Being adjacent to Bluestone Lake, the state's third largest body of water, the area offers guests boating, canoeing and fishing opportunities. Hunting is offered due to the wildlife management area status. Bluestone Wildlife Management Area has 330 primitive campsites and picnic areas. Avid fishermen enjoy float fishing and stocked trout fishing in Indian Creek. Although not a primary activity, hiking can also be found. Boat rentals are nearby.

## ACCOMMODATIONS

### Campground Areas

- Indian Mills – 15 sites
- Keatley – 15 sites
- Bertha – 55 sites on lake
- Mouth of Indian Creek – 100 sites on New River
- Shanklin's Ferry – 80 sites on New River
- Cedar Branch – 45 sites on New River
- Bull Falls – 20 sites on lake

### One Rustic Pavilion

- Equipped with electric stove, refrigerator, bathrooms and stone fireplace.
- Call for rental information.



## CAMPING RULES

### Campground Occupancy

- Check-out is noon.
- Two motor vehicles per site.
- Only one camping unit per site (not per family).
- Sites are rented on a first-come, first-served basis.
- Camping can only occur at designated numbered sites.
- Hunting is not permitted in or around the campground areas.
- Campers must register and pay at check-in booth.

### Conduct

- Campers must show decent and respectable behavior.
- Campers must not be a nuisance or infringe on the rights of others.
- No explosive materials or dangerous substances are allowed.
- Uncased firearms, bows and arrows are prohibited.
- A 15 mph speed limit or less is observed in campgrounds.
- Motorbikes or ATVs are prohibited.
- No bicycle riding after dark unless lighted in front and rear.
- WV state law requires bicycle riders under 15 years of age to wear a helmet.
- Campers are responsible for any damages.
- Vehicles and campers must meet state licensing requirements.
- Campers are responsible for observing all posted rules and regulations.
- No alcohol.

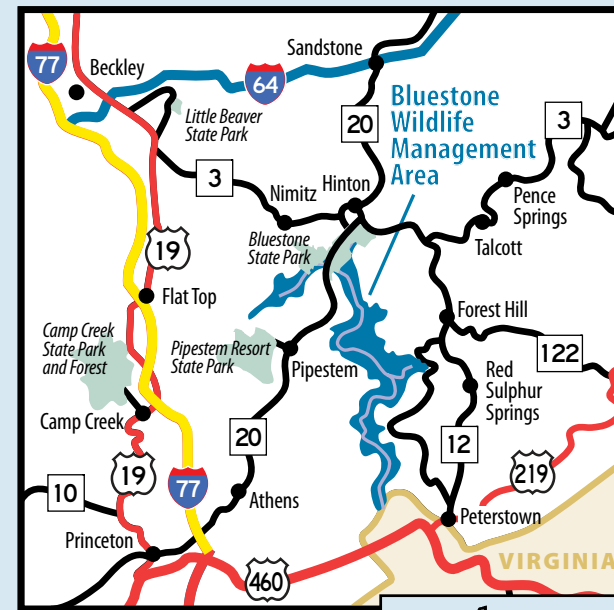
### Pets

- Only dogs or cats.
- Pets must be on a leash not more than 10 feet in length.

### Fires

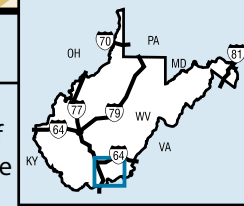
- Limited fireplace and stove.
- Fire must be attended.

**NOTE:** Camping permits may be revoked without refund for violation of campground rules.



## LOCATION

Located in southeastern part of West Virginia, Bluestone Wildlife Management Area is accessible by several major highways. Take exit 139 (Sandstone/Hinton) off I-64 to state Route 20 south to Hinton. From I-77 south, take the Athens Road Exit (exit 14) to state Route 20 north to Hinton. From Hinton, take state Route 12 south and travel 17 miles. Turn right on Indian Mills Road (county Road 21/2), and travel 3 miles.



## Bluestone Wildlife Management Area

HC 65, Box 91  
Indian Mills, West Virginia 24935-9204  
304-466-3398  
[www.bluestonewma.com](http://www.bluestonewma.com)

West Virginia Division of Natural Resources, 324 4th Avenue, South Charleston, WV 25303

STATEMENT OF POLICY REGARDING THE EQUAL OPPORTUNITY  
TO USE FACILITIES AND PARTICIPATE IN PROGRAMS

Visitors are responsible for observing park rules and regulations.

"It is the policy of the West Virginia Division of Natural Resources to provide its facilities, accommodations, services and programs to all persons without regard to gender, race, color, age, religion, national origin or disability. Proper licenses, registration and compliance with official rules and regulations are the only sources of restrictions for facility use or program participation."

"The West Virginia Division of Natural Resources is an equal opportunity employer."  
Information provided in this brochure is current as of design date, but subject to change thereafter.

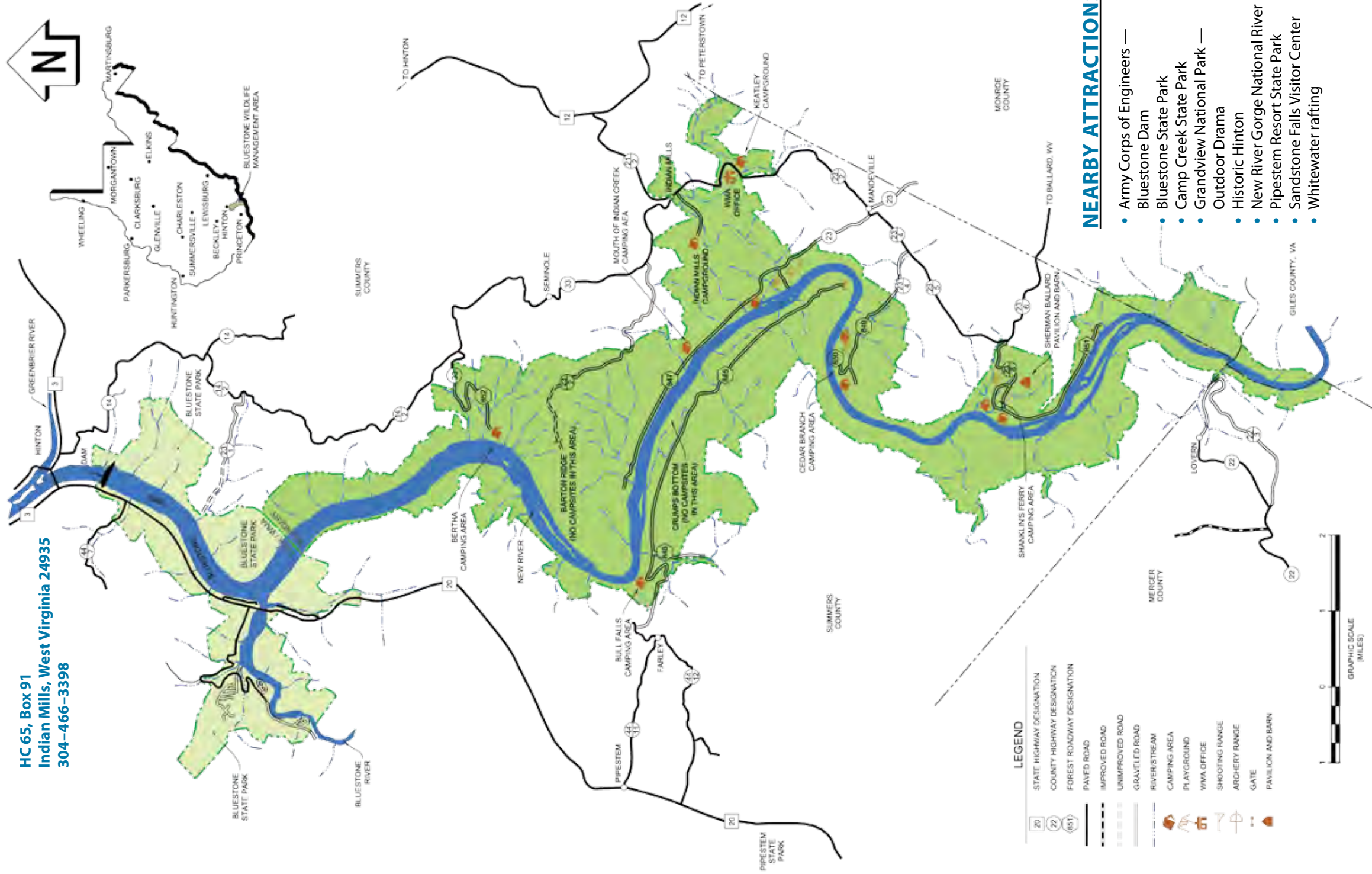
080610



# Bluestone

## Wildlife Management Area

HC 91, Box 91  
 Indian Mills, West Virginia 24935  
 304-466-3398



### LEGEND

- STATE HIGHWAY DESIGNATION
- COUNTY HIGHWAY DESIGNATION
- FOREST ROADWAY DESIGNATION
- PAVED ROAD
- IMPROVED ROAD
- UNIMPROVED ROAD
- GRAVELLED ROAD
- RIVER/STREAM
- CAMPING AREA
- PLAYGROUND
- WMA OFFICE
- SHOOTING RANGE
- ARCHERY RANGE
- GATE
- PAVILION AND BARN

### NEARBY ATTRACTIONS

- Army Corps of Engineers — Bluestone Dam
- Bluestone State Park
- Camp Creek State Park
- Grandview National Park — Outdoor Drama
- Historic Hinton
- New River Gorge National River
- Pipestem Resort State Park
- Sandstone Falls Visitor Center
- Whitewater rafting